



**Cal/OSHA, DOT HAZMAT, EEOC,
EPA, HAZWOPER, HIPAA, IATA,
IMDG, TDG, MSHA, OSHA, and
Canada OHS Regulations and
Safety Online Training**

Since 2008

This document is provided as a training aid
and may not reflect current laws and regulations.

Be sure and consult with the appropriate governing agencies
or publication providers listed in the "Resources" section of our website.

www.ComplianceTrainingOnline.com



[Facebook](#)



[LinkedIn](#)



[Twitter](#)

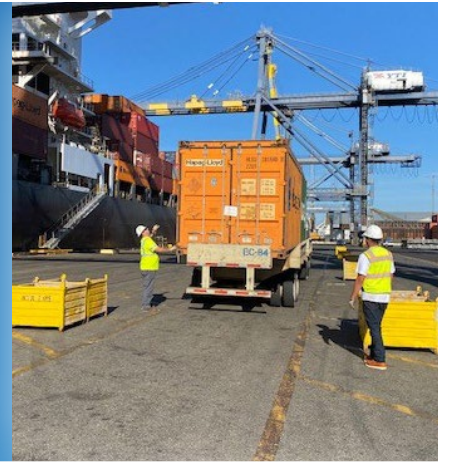


[Website](#)



Five Ways to Stay Safe When Working on Chassis in Marine Terminals

1 Be aware of vehicle traffic patterns and conduct work in a protected area.



2 Disconnect and secure chassis from semi-tractors before performing maintenance or repairs.



3 Never position yourself under a jacked vehicle or equipment.



4 Follow safety procedures for bleeding pressure from charged brake cylinders before performing work or removing them.



5 Service single- and multi-piece rim wheels according to 29 CFR 1910.177 and 1917.44.

